

Frogs of Connecticut Pneumonics

Order Anura (Salientia) – Toads & Frogs (tail-less amphibians)

Family Hylidae – Treefrogs

Pseudacris – chorus frogs

P. crucifer Northern spring peeper Peep

Hyla – treefrogs

H. versicolor Gray treefrog trill (RB woodpecker)

Family Ranidae – True Frogs

Rana – true frogs

R. catesbeiana Bullfrog Low “row” or Race car driving by

R. clamitans Green frog Broken banjo string

R. pipiens Northern leopard frog Rubbing balloon

R. kauffeldi Atlantic coast leopard frog Duck-like quacks like wood frog; one syllable

R. palustris Pickerel frog Snore

R. sylvatica Wood frog Duck-like quacks; 2 short syllables

Family Bufonidae – True Toads

Bufo – true toads

B. americanus American toad Long trill (20-30 seconds)

B. fowleri Fowler’s toad Weeeeeeee; “chain-smoking baby”

Pelobatidae (Scaphiopodidae) – North American spadefoots

Scaphiopus – southern spadefoots

S. holbrookii Eastern spadefoot toad Waaaah (descending pitch)

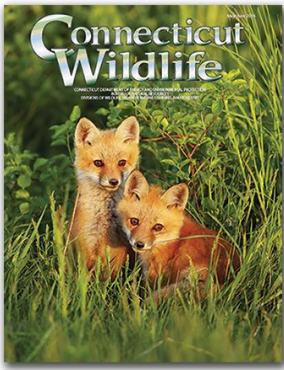
CONNECTICUT FROG CALL PHENOLOGY

Wood frog	<i>Rana sylvatica</i>	February-April
Spring peeper	<i>Pseudacris crucifer</i>	March-May
American toad	<i>Bufo americanus</i>	March-June
Pickerel frog	<i>Rana palustris</i>	April-May
Bullfrog	<i>Rana catesbeiana</i>	April-August
Gray Tree frog	<i>Hyla versicolor</i>	May-June
Fowler's toad	<i>Bufo fowleri</i>	May-June
Green frog	<i>Rana clamitans</i>	May-August
<i>Rare Frogs</i>		
Atlantic coast leopard frog	<i>Rana kauffeldi</i>	March-April?
Northern leopard frog	<i>Rana pipiens</i>	March-April
Eastern spadefoot toad	<i>Scaphiopus holbrookii</i>	thru Spring-Summer

For more information, please visit the

Yale PEABODY MUSEUM OF NATURAL HISTORY

Online Guide to Amphibians and Reptiles of Connecticut at <http://bit.ly/2mFehCV>



And check out the Department of Energy and Environmental Protection – Bureau of Natural Resources' **Connecticut Wildlife** magazine, published 6 times a year (\$8/yr), at <http://bit.ly/2mtKTml>